

CONTENTS

01 COMPANY

About LUXFIGHTER	4
Why LUXFIGHTER	6
Our Sales Network	8

02 PRODUCTS

LED Headlight Bulbs

Q66 Premium Series	13
Q36 LimitedPro Series 24V	14
Q36 LimitedPro Series	16
Q35 LimitedPro Series	17
Q26 Fronner Series	18
Q12 Basefit Series	19
Q11 Basefit Series	21
R30 Premium Series	23
R20 Genesis Series	26
R10 Genesis Series	28

LED Signal light Bulbs

CodePro Series	30
TurnPro Series	32

LED Fog light Bulbs

Binggo Series	41
Binggo Series II	43

LED Grille light Bulbs

Genesis Series	45
----------------	----

LED Motorcycle light Bulbs

MT LimitedPro Series	48
Binggo Series	51

03 PATENTS & CERTIFICATES

Patents ,Certificates	54
-----------------------	----

01



COMPANY



About LUXFIGHTER

LUXFIGHTER, registered in USA,EU, Japan, Korea,Indonesia and China, it's a brand of Zhuhai Zhengyuan Optoelectronic Technology Co.,Ltd.We are a Chinese manufacturer for Automotive led lights since 2007.

Based on original halogen bulb, our R&D team is specializing in developing smallest size automotive led lights with maximum power. Luxfighter led lights have been fully tested with precise light cutting and high LUX in perfect beam pattern.Our factory has achieved 200+ invention and Designing Patents. We are China High-Tech Enterprise since 2017.

Our factory has passed IATF 16949 and ISO9001 since 2015. Most of our products has passed FCC, CE, UL, FDA.

OEM ODM orders are welcome.



LUXFIGHTER established in
2007



Available in Over
60 Countries & Regions



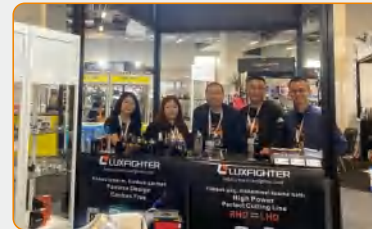
Annual turnover
\$50 Million



Annual production capacity
1,600,000 units

Our Sales Network

LUXFIGHTER's network of partners is expanding globally every year.



02



PRODUCTS



LED Headlight Bulbs

Q66

PREMIUM SERIES

Technical Specifications

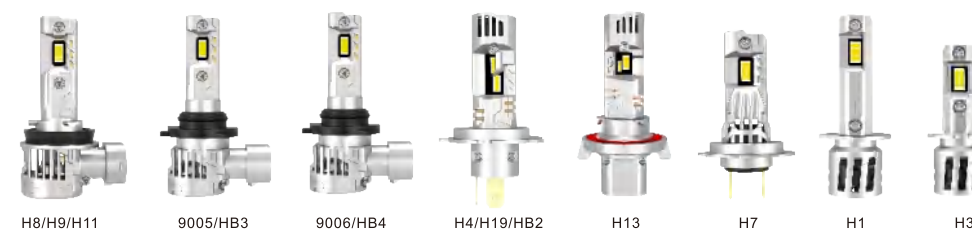
Power	50W(1PC)
Luminous Flux	5500LM(1PC)
LED Type	Customized SMD chips
Color Temperature	6500K±500K(optional)
Working Voltage	DC12-16V
Current	3.3A±0.2A
Operating life	≥50000H
Heat dissipation	with fan
Material	Aluminum
Waterproof level	Ip65



- Dual copper pipe design
- No light decay and longer service life compared to halogen
- Plug&Play, 5 minutes completely DIY installation
- Perfect light pattern, brighter, wider, further, safer driving
- Built-in Canbus
- Offroad

Product Models

H1, H3, H7, H8/H9/H11, 9005/HB3, 9006/HB4, 9012, 880/889/899, 881/886/898, 5202, P13W, PSX24W, PSX26W, H11B, H4/H19/HB2, H13, 9004, 9007, H15



Q36

LIMITEDPRO SERIES

24V for Truck

Technical Specifications

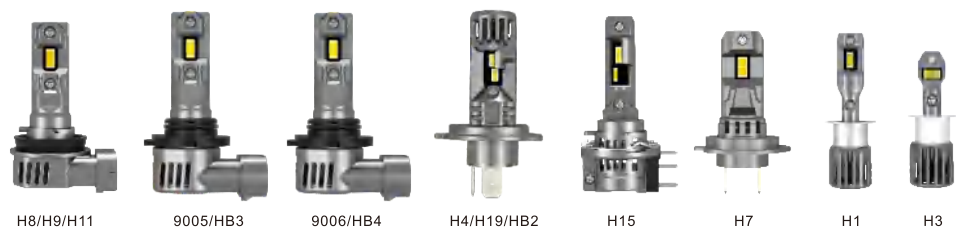
Power	25W(1PC)
Luminous Flux	2500LM(1PC)
LED Type	Customized LED chips
Color Temperature	6500K±500K(optional)
Working Voltage	DC24-32V
Current	2.2A±0.3A
Operating life	≥50000H
Heat dissipation	with fan
Material	Aluminum
Waterproof level	Ip65



- Suitable for installation on pick-up trucks, vans, buses
- No light decay and longer service life compared to halogen
- Plug&Play, 5 minutes completely DIY installation
- Perfect light pattern, brighter, wider, further, safer driving

Product Models

H1, H3, H7, H8/H9/H11, 9005/HB3, 9006/HB4, 9012, H4/H19/HB2, H13, 9004, 9007



H8/H9/H11 9005/HB3 9006/HB4 H4/H19/HB2 H15 H7 H1 H3





Q36

LIMITEDPRO SERIES

Technical Specifications

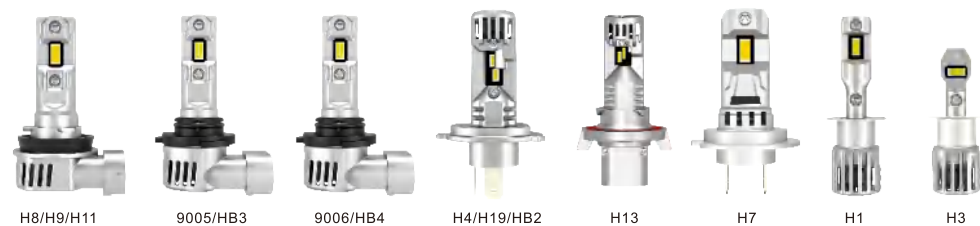
Power	30W(1PC)
Luminous Flux	3000LM(1PC)
LED Type	Customized LED chips
Color Temperature	6000K±500K(optional)
Working Voltage	DC12-16V
Current	2.2A±0.3A
Operating life	≥50000H
Heat dissipation	with fan
Material	Aluminum
Waterproof level	Ip65

- Wider application, headlights can be used as car headlights & fog lights
- No light decay and longer service life compared to halogen
- Plug&Play, 5 minutes completely DIY installation
- Perfect light pattern, brighter, wider, further, safer driving
- Built-in Canbus
- Steet Legal lighting



Product Models

H1, H3, H7, H8/H9/H11, 9005/HB3, 9006/HB4, 9012, 880/889/899, 881/886/898, 5202, P13W, PSX24W, PSX26W, H4/H19/HB2, H13, 9004, 9007, H15, R2



Q35

LIMITEDPRO SERIES

Technical Specifications

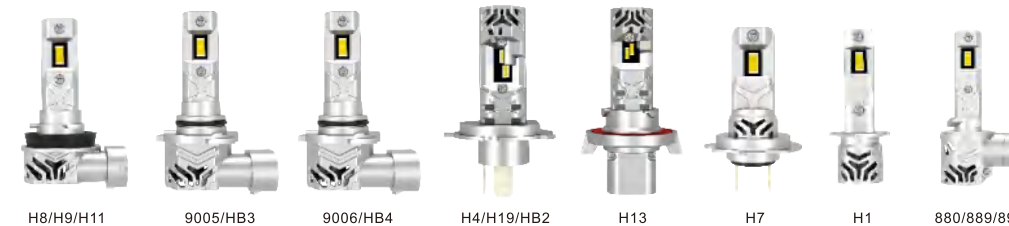
Power	28W(1PC)
Luminous Flux	3000LM(1PC)
LED Type	Customized LED chips
Color Temperature	6500K±500K(optional)
Working Voltage	DC12-16V
Current	2.2A±0.3A
Operating life	≥50000H
Heat dissipation	with fan
Material	Zinc alloy
Waterproof level	Ip65

- 1:1 same size of halogen to meet all kinds of cars
- No light decay and longer service life compared to halogen
- Plug&Play, 5 minutes completely DIY installation
- Perfect light pattern, brighter, wider, further, safer driving



Product Models

H1, H3, H7, H8/H9/H11, 9005/HB3, 9006/HB4, 9012, 880/889/899, 881/886/898, H4/H19/HB2, H13, 9004, 9007



Q26

FRONNER SERIES



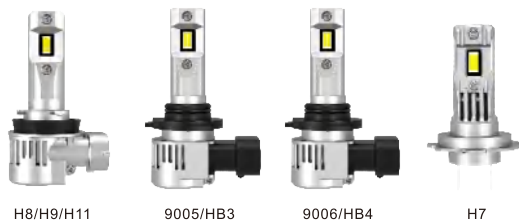
Technical Specifications

Power	40W(1PC)
Luminous Flux	3600LM(1PC)
LED Type	Customized LED chips
Color Temperature	6500K±500K(optional)
Working Voltage	DC12-16V
Current	2.5A±0.3A
Operating life	≥50000H
Heat dissipation	with fan
Material	Aluminum
Waterproof level	Ip65

- Wider application, headlights can be used as car headlights & fog lights
- No light decay and longer service life compared to halogen
- Plug&Play, 5 minutes completely DIY installation
- Perfect light pattern, brighter, wider, further, safer driving

Product Models

H7, H8/H9/H11, 9005/HB3, 9006/HB4



H8/H9/H11 9005/HB3 9006/HB4 H7



Q12

BASEFIT SERIES



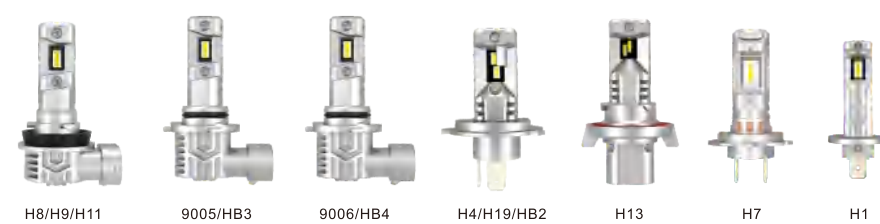
Technical Specifications

Power	20W(1PC)
Luminous Flux	1700LM(1PC)
LED Type	Customized LED chips
Color Temperature	6000K±500K(optional)
Working Voltage	DC12-16V
Current	1.2A±0.3A
Operating life	≥50000H
Heat dissipation	Fanless
Material	Aluminum
Waterproof level	Ip65

- Wider application, headlights can be used as car headlights & fog lights
- No light decay and longer service life compared to halogen
- Plug&Play, 5 minutes completely DIY installation
- Perfect light pattern, brighter, wider, further, safer driving

Product Models

H1, H7, H8/H9/H11, 9005/HB3, 9006/HB4, H4/H19/HB2, H13, 9004, 9007



H8/H9/H11 9005/HB3 9006/HB4 H4/H19/HB2 H13 H7 H1



LED Headlight Bulbs



Q11

BASEFIT SERIES

Technical Specifications

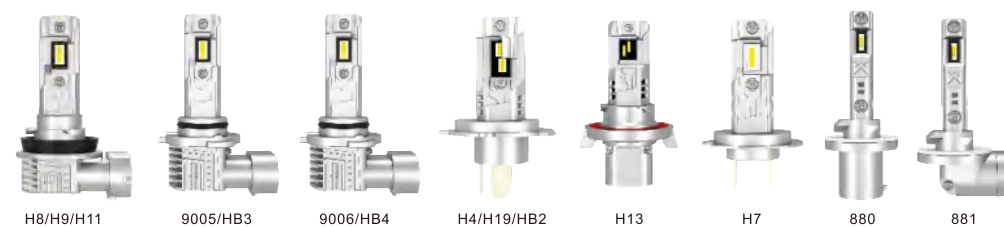
Power	20W(1PC)
Luminous Flux	2000LM(1PC)
LED Type	Customized LED chips
Color Temperature	6000K±500K (optional)
Working Voltage	DC12-16V
Current	1.2A±0.3A
Operating life	≥50000H
Heat dissipation	Fanless
Material	Zinc alloy
Waterproof level	Ip65



- 1:1 same size of halogen to meet all kinds of cars
- No light decay and longer service life compared to halogen
- Plug&Play, 5 minutes completely DIY installation
- Perfect light pattern, brighter, wider, further, safer driving

Product Models

H1, H3, H7, H8/H9/H11, 9005/HB3, 9006/HB4, 9012, 880/889/899, 881/886/898, H4/H19/HB2, H13, 9004, 9007



H8/H9/H11

9005/HB3

9006/HB4

H4/H19/HB2

H13

H7

880

881



LED Headlight Bulbs

R30

PREMIUM SERIES



Technical Specifications

Power	90W(1PC)
Luminous Flux	8500LM(1PC)
LED Type	Customized LED chips
Color Temperature	6500K±500K(optional)
Working Voltage	DC11-30V
Current	6.6A±0.6A
Operating life	≥50000H
Heat dissipation	With fan
Material	Aluminum
Waterproof level	Ip65



Driver

- LUXFIGHTER' s newest and brightest headlight bulbs
- No light decay and longer service life compared to halogen
- External driver, 5 minutes completely DIY installation
- Perfect light pattern, brighter, wider, further, safer driving

Product Models

H1,H3,H7,H8/H9/H11,9005/HB3,9006/HB4,9012,880/889/899,881/886/898,5202, P13W,PSX24W,PSX26W,H4/H19/HB2,H13,9004,9007



H8/H9/H11 9005/HB3 9006/HB4 H4/H19/HB2 9004 H7 H1 H3

R30

PREMIUM SERIES

Two-color headlight Technical Specifications

Power	65W(1PC)
Luminous Flux	6500LM(1PC)
LED Type	Customized LED chips
Color Temperature	6500K/ 3000K(optional)
Working Voltage	DC11-30V
Current	4.8A±0.2A
Operating life	≥50000H
Heat dissipation	With fan
Material	Aluminum
Waterproof level	Ip65



Driver

- LUXFIGHTER' s best-selling two-color headlight
- No light decay and longer service life compared to halogen
- External driver, 5 minutes completely DIY installation
- Perfect light pattern, brighter, wider, further, safer driving

Product Models

H7,H8/H9/H11,9005/HB3,9006/HB4,9012,5202,P13W,PSX24W,PSX26W, H4/H19/HB2



H8/H9/H11 9005/HB3 9006/HB4 9012 H7 H4/H19/HB2

R30

PREMIUM SERIES

Three-color headlight Technical Specifications

Power	65W(1PC)
Luminous Flux	6500LM(1PC)
LED Type	Customized LED chips
Color Temperature	6500K& 3000K(optional)
Working Voltage	DC11-30V
Current	4.8A±0.2A
Operating life	≥50000H
Heat dissipation	With fan
Material	Aluminum
Waterproof level	Ip65



Driver

- LUXFIGHTER' s best-selling three-color headlight
- No light decay and longer service life compared to halogen
- External driver, 5 minutes completely DIY installation
- Perfect light pattern, brighter, wider, further, safer driving

Product Models

H7,H8/H9/H11,9005/HB3,9006/HB4,9012,5202,P13W,PSX24W,PSX26W



H8/H9/H11 9005/HB3 9006/HB4 9012 H7

R20

GENESIS SERIES



Technical Specifications

Power	60W(1PC)
Luminous Flux	7000LM(1PC)
LED Type	Customized SMD chips
Color Temperature	6500K±500K(optional)
Working Voltage	DC12-16V
Current	4.4A±0.5A
Operating life	≥50000H
Heat dissipation	With fan
Material	Aluminum
Waterproof level	Ip65

- LUXFIGHTER' s best-selling super bright headlights
- No light decay and longer service life compared to halogen
- Built-in driver, 5 minutes completely DIY installation
- Perfect light pattern, brighter, wider, further, safer driving

Product Models

H7,H8/H9/H11,9005/HB3,9006/HB4,9012,5202,P13W,PSX24W,PSX26W



H8/H9/H11 9005/HB3 9006/HB4 H7

R20

GENESIS SERIES



Technical Specifications

Power	55W(1PC)
Luminous Flux	4500LM(1PC)
LED Type	Customized LED chips
Color Temperature	6500K±500K(optional)
Working Voltage	DC11-30V
Current	3.8A±0.3A
Operating life	≥50000H
Heat dissipation	With fan
Material	Aluminum
Waterproof level	Ip65

- LUXFIGHTER' s best-selling super bright headlights
- No light decay and longer service life compared to halogen
- Built-in driver, 5 minutes completely DIY installation
- Perfect light pattern, brighter, wider, further, safer driving



Driver

Product Models

H4/H19/HB2,H13,9004,9007



H4/H19/HB2 H13 9004

RIO

GENESIS SERIES



Technical Specifications

Power	50W(1PC)
Luminous Flux	5500LM(1PC)
LED Type	Customized SMD chips
Color Temperature	6500K±500K(optional)
Working Voltage	DC12-16V
Current	3.5A±0.2A
Operating life	≥50000H
Heat dissipation	With fan
Material	Aluminum
Waterproof level	Ip65

- One of the best-selling models of LUXFIGHTER headlights
- No light decay and longer service life compared to halogen
- Built-in driver, 5 minutes completely DIY installation
- Perfect light pattern, brighter, wider, further, safer driving

Product Models

H7, H8/H9/H11, 9005/HB3, 9006/HB4, 9012, 5202, P13W, PSX24W, PSX26W



H8/H9/H11 9005/HB3 9006/HB4 9012 H7

RIO

GENESIS SERIES



Technical Specifications

Power	50W(1PC)
Luminous Flux	4500LM(1PC)
LED Type	Customized LED chips
Color Temperature	6500K±500K(optional)
Working Voltage	DC11-30V
Current	3.5A±0.2A
Operating life	≥50000H
Heat dissipation	With fan
Material	Aluminum
Waterproof level	Ip65

- One of the best-selling models of LUXFIGHTER headlights
- No light decay and longer service life compared to halogen
- Built-in driver, 5 minutes completely DIY installation
- Perfect light pattern, brighter, wider, further, safer driving

Product Models

H4/H19/HB2, H13, 9004, 9007



H4/H19/HB2 H13 9004



CODEPRO SERIES

T20(7443)

Technical Specifications

Power	30W(1PC)
Luminous Flux	2200LM(1PC)
LED Type	Customized LED chips
Light Color	White/Amber/Red (optional)
Working Voltage	DC12-16V
Current	2.2A±0.3A
Operating life	≥50000H
Heat dissipation	With fan
Material	Zinc alloy
Waterproof level	Ip65

- For use in tail light, stop lamp, backup light, turn light, Rear Fog Lamp
- New Revolutionary for LED signal lights
- Built-in Canbus
- China, EU, USA Invention Patent Product
- DRL + Turn lights 2 in 1 function
- Break + Turn lights 2 in 1 function

Product Models

7443, 3157, 1157



CODEPRO SERIES

T20(7440)

Technical Specifications

Power	30W(1PC)
Luminous Flux	2800LM(1PC)
LED Type	Customized LED chips
Light Color	White/Amber/Red (optional)
Working Voltage	DC9-16V
Current	2.2A±0.3A
Operating life	≥50000H
Heat dissipation	With fan
Material	Zinc alloy
Waterproof level	Ip65

- For use in tail light, stop lamp, backup light, turn light, Rear Fog Lamp

Product Models

7440, 3156, 1156, T15





TURNPRO SERIES

3157
Technical Specifications

Power	30W(1PC)
Luminous Flux	2000LM(1PC)
LED Type	Customized LED chips
Light Color	White/Amber/Red (optional)
Working Voltage	DC12-16V
Current	2.2A±0.3A
Operating life	≥50000H
Heat dissipation	Fanless
Material	Zinc alloy
Waterproof level	Ip65

- For use in tail light, stop lamp, backup light, turn light, Rear Fog Lamp
- New Revolutionary for LED signal lights
- Built-in Canbus
- China, EU, USA Invention Patent Product
- DRL + Turn lights 2 in 1 function
- Break + Turn lights 2 in 1 function

Product Models

7443, 3157, 1157



TURNPRO SERIES

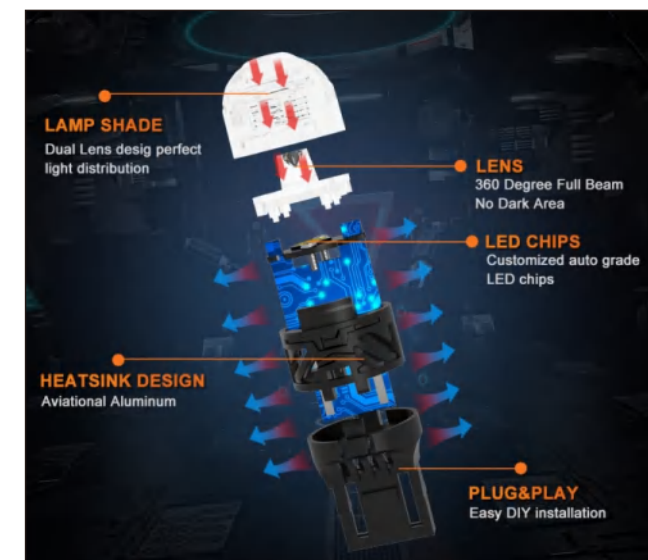
1156
Technical Specifications

Power	30W(1PC)
Luminous Flux	2000LM(1PC)
LED Type	Customized LED chips
Light Color	White/Amber/Red (optional)
Working Voltage	DC12-16V
Current	2.2A±0.3A
Operating life	≥50000H
Heat dissipation	Fanless
Material	Zinc alloy
Waterproof level	Ip65

- For use in tail light, stop lamp, backup light, turn light, Rear Fog Lamp

Product Models

7440, 3156, 1156





LED Signal Light Bulbs



TURNPRO SERIES

T15 Technical Specifications

Power	20W(1PC)
Luminous Flux	2000LM(1PC)
LED Type	Customized LED chips
Light Color	White/Amber/Red (optional)
Working Voltage	DC12-16V
Current	1.5A±0.3A
Operating life	≥50000H
Heat dissipation	Fanless
Material	Zinc alloy
Waterproof level	Ip65

- For use in tail light, stop lamp, backup light, turn light, Rear Fog Lamp





TURNPRO SERIES

T10
Technical Specifications

Power	4.5W(1PC)
Luminous Flux	400LM(1PC)
LED Type	Customized LED chips
Light Color	White/Amber/Red (optional)
Working Voltage	DC12-16V
Current	0.4A±0.05A
Operating life	≥50000H
Heat dissipation	Fanless
Material	Zinc alloy
Waterproof level	Ip65

• DRL, license plate light, interior light

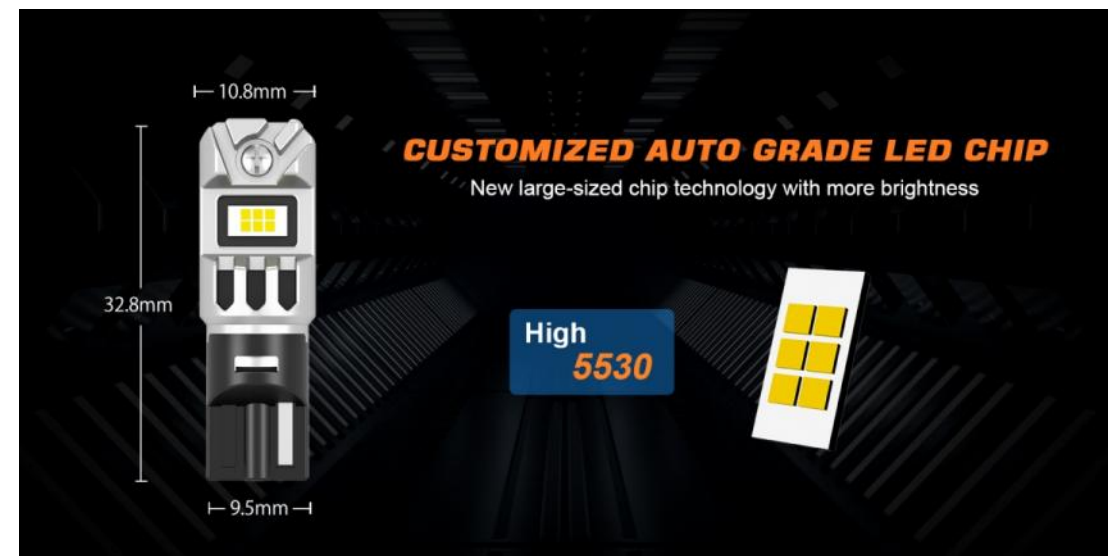
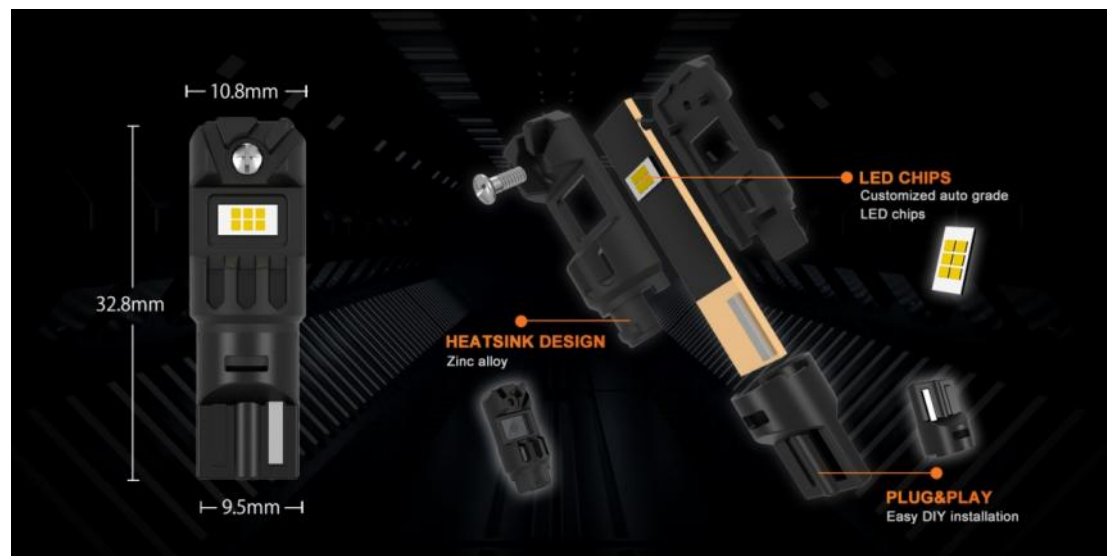


TURNPRO SERIES

T10
Technical Specifications

Power	5.5W(1PC)
Luminous Flux	600LM(1PC)
LED Type	Customized LED chips
Light Color	White/Amber/Red (optional)
Working Voltage	DC12-16V
Current	0.4A±0.05A
Operating life	≥50000H
Heat dissipation	Fanless
Material	Zinc alloy
Waterproof level	Ip65

• DRL, license plate light, interior light



LED Signal Light Bulbs



TURNPRO SERIES

T10 Technical Specifications

Power	3W(1PC)
Luminous Flux	200LM(1PC)
LED Type	Customized LED chips
Light Color	White/Amber/Red (optional)
Working Voltage	DC12-16V
Current	0.2A±0.0.5A
Operating life	≥50000H
Heat dissipation	Fanless
Material	Zinc alloy
Waterproof level	Ip65

- DRL, license plate light, interior light





LED Fog light Bulbs

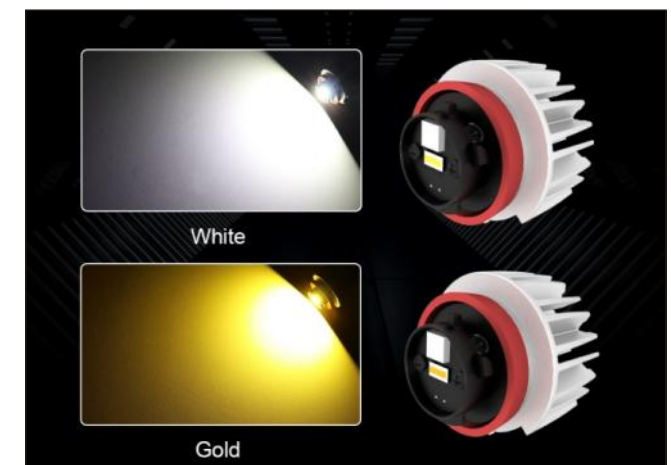
Binggo SERIES

LIB(Fanless Fog Lights) Technical Specifications

Power	15W(1PC)
Luminous Flux	1500LM(1PC)
LED Type	Customized LED chips
Color Temperature	6500K/3000K(optional)
Working Voltage	DC12-16V
Current	1A±0.1A
Operating life	≥50000H
Heat dissipation	Fanless
Material	Zinc alloy
Waterproof level	Ip65



- LUXFIGHTER' s latest and brightest fog light
- No light decay, longer lifespan than original car lights
- Plug&Play, 5 minutes completely DIY installation
- Perfect light pattern, brighter, wider, further, safer driving



Binggo SERIES

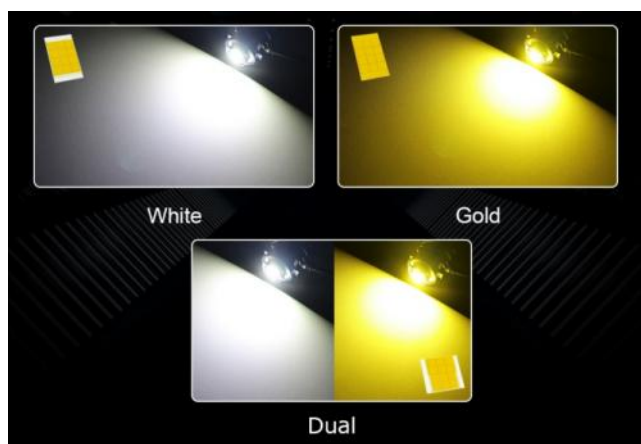
LIB(Built-in Cooling Fan) Technical Specifications

Power	60W(1PC)
Luminous Flux	6600LM(1PC)
LED Type	Customized LED chips
Color Temperature	6500K/3000K(optional)
Working Voltage	DC11-30V
Current	4.3A±0.2A
Operating life	≥50000H
Heat dissipation	With fan
Material	Zinc alloy
Waterproof level	Ip65



Driver

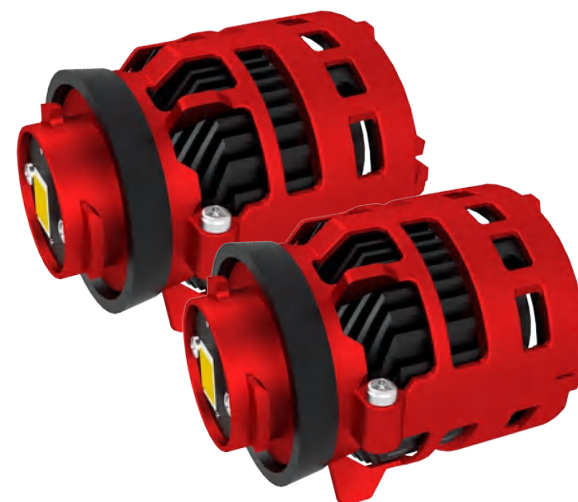
- LUXFIGHTER' s latest and brightest fog light
- No light decay, longer lifespan than original car lights
- External driver, 5 minutes completely DIY installation
- Perfect light pattern, brighter, wider, further, safer driving



Binggo SERIES II

LIB(Built-in Cooling Fan) Technical Specifications

Power	60W(1PC)
Luminous Flux	6600LM(1PC)
LED Type	Customized LED chips
Color Temperature	6500K/3000K(optional)
Working Voltage	DC11-30V
Current	4.3A±0.2A
Operating life	≥50000H
Heat dissipation	With fan
Material	Zinc alloy
Waterproof level	Ip65



Driver

- LUXFIGHTER' s latest and brightest fog light
- No light decay, longer lifespan than original car lights
- External driver, 5 minutes completely DIY installation
- Perfect light pattern, brighter, wider, further, safer driving





LED Grille light Bulbs



Genesis Series

Built-in Cooling Fan Technical Specifications

Power	35W(1PC)
Luminous Flux	2200LM(1PC)
LED Type	Customized LED chips
Color Temperature	6500K/4300K/3000K(optional)
Working Voltage	DC12-16V
Current	2.5A±0.2A
Operating life	≥50000H
Heat dissipation	With fan
Material	Aluminum Housing, Acrylic
Waterproof level	Ip65

- LUXFIGHTER' s latest and brightest car grille light
- Easy to install, DIY installation completed within 5 minutes
- Perfect lighting, brighter, wider, farther, and safer driving





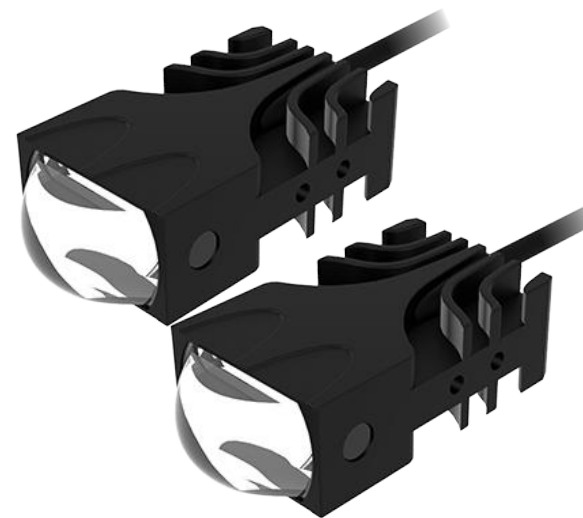
LED Grille light Bulbs

Genesis Series

Technical Specifications

Power	18W(1PC)
Luminous Flux	1100LM(1PC)
LED Type	Customized LED chips
Color Temperature	6500K/4300K/3000K(optional)
Working Voltage	DC12-16V
Current	1.2A±0.2A
Operating life	≥50000H
Heat dissipation	Fanless
Material	Aluminum Housing, Acrylic
Waterproof level	Ip65

- LUXFIGHTER' s latest and brightest car grille light
- Easy to install, DIY installation completed within 5 minutes
- Perfect lighting, brighter, wider, farther, and safer driving



HIGH LUMINOUS EFFICACY
LOW ENERGY CONSUMPTION

High-strength acrylic mirror sheet
Able to focus light from a distance and achieve a uniform road lighting distribution.

Warm white beam Yellow beam White&Yellow beam

MT

LIMITEDPRO SERIES



Technical Specifications

Power	10W(1PC)
Luminous Flux	500LM(1PC)
LED Type	Customized LED chips
Color Temperature	6500K±500K(optional)
Working Voltage	DC12V-16V
Current	0.65A±0.2A
Operating life	≥50000H
Heat dissipation	Fanless
Material	Zinc alloy
Waterproof level	Ip65

- LUXFIGHTER' s best-selling super bright headlights
- No light decay and longer service life compared to halogen
- Plug&Play, 5 minutes completely DIY installation
- Perfect light pattern, brighter, wider, further, safer driving

Product Models

BA20D/S2,P15D/T19



BA20D/S2

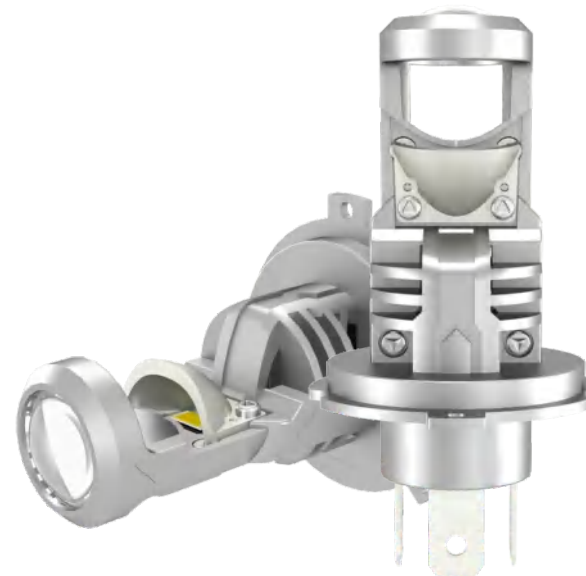
P15D/T19

MT

LIMITEDPRO SERIES

With lenses

Technical Specifications



Power	35W(1PC)
Luminous Flux	3400LM(1PC)
LED Type	Customized LED chips
Color Temperature	6500K±500K(optional)
Working Voltage	DC12V-16V
Current	2.5A±0.2A
Operating life	≥50000H
Heat dissipation	With fan
Material	Zinc alloy
Waterproof level	Ip65

- One of the best-selling models of LUXFIGHTER headlights.
- No light decay and longer service life compared to halogen
- Plug&Play, 5 minutes completely DIY installation
- Perfect light pattern, brighter, wider, further, safer driving

Product Models

TJ-H7,TJ-H4



TJ-H7

TJ-H4

03



PATENTS & CERTIFICATES

We are very happy that you have turned to this place!

We strive to hope you like our products. Your continued support for the LUXFIGHTER team means a lot to us!

Feel free to contact us on the following social media platforms.

If you have any questions or feedback, you can reach us through the provided URLs or our email address.

Have a great day!



LinkedIn



Twitter



Facebook



Instagram

INTERESTED IN OUR PRODUCTS

OUR WEBSITE

www.luxfighter.com



OUR EMAIL

sales@luxfighter.com